

THE BLUFFS

IN SECTIONS 11, 12, 13, 14, T44N, R11W, N.M.P.M.

SAN MIGUEL COUNTY, COLORADO 1011

PLAT 250280

THE BLUFFS
TO
BILLORADO PROPERTIES

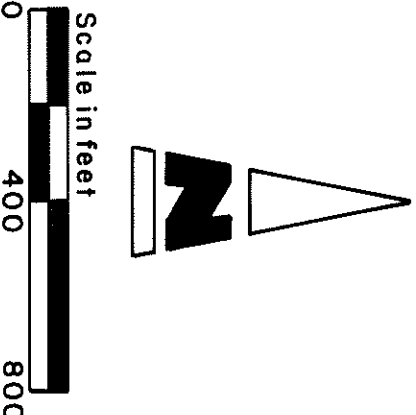
NOTE: A 15.00 ft. wide utility easement is reserved along the North or East side of Bluff View Drive and along the West side of High Bluff Drive.

NOTE: Refer to recorded covenants concerning use of Road and Utility Easements.

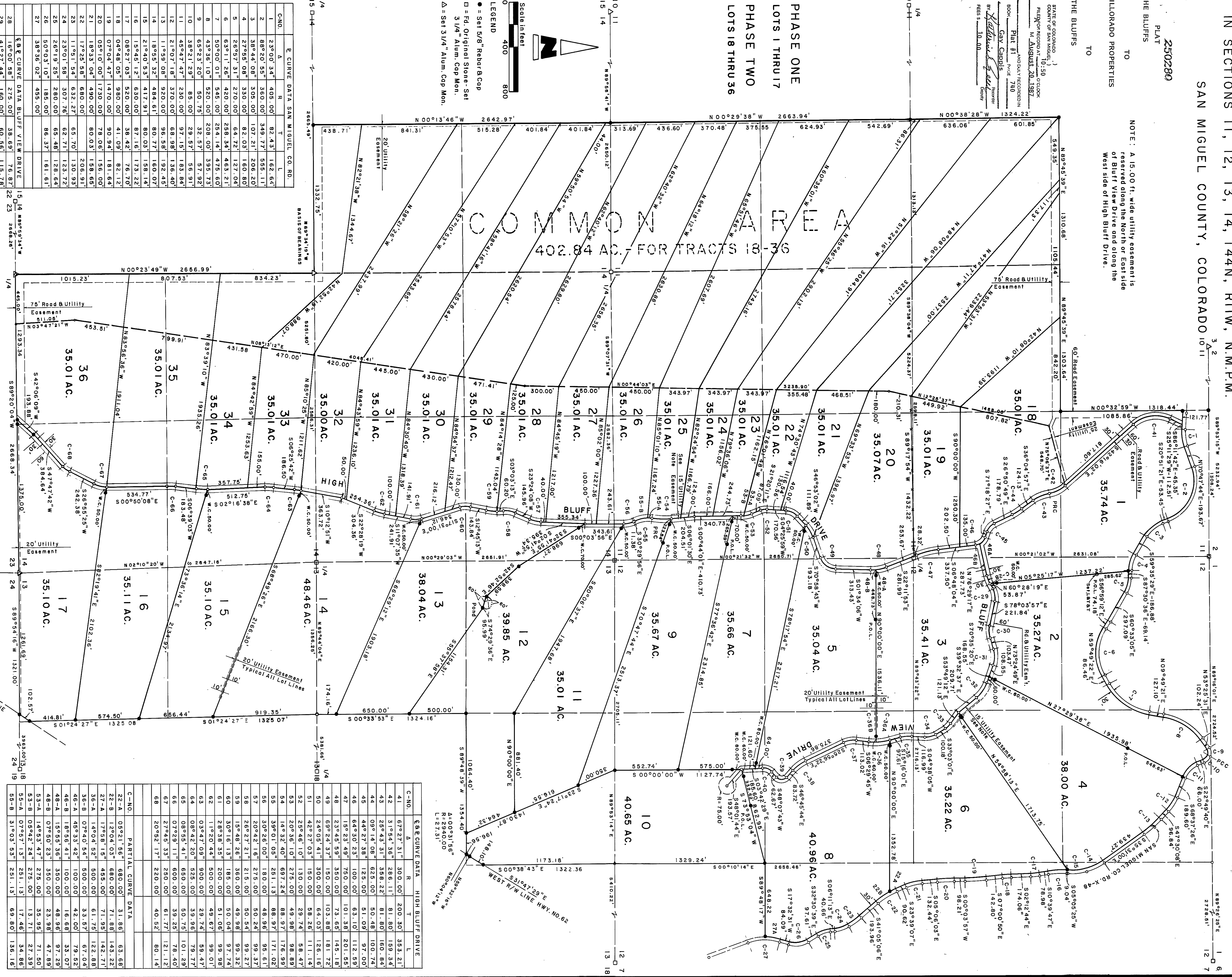
250280 County Clerk, San Miguel County, CO

STATE OF COLORADO
COUNTY OF SAN MIGUEL
FILED FOR RECORD
M. August 20, 1987
10:30
BY: *Gay Campbell*
PLAT # 250280
RECORDED IN BOOK 140
PAGE 140
BY: *Gay Campbell*
PLAT # 250280
RECORDED IN BOOK 140
PAGE 140

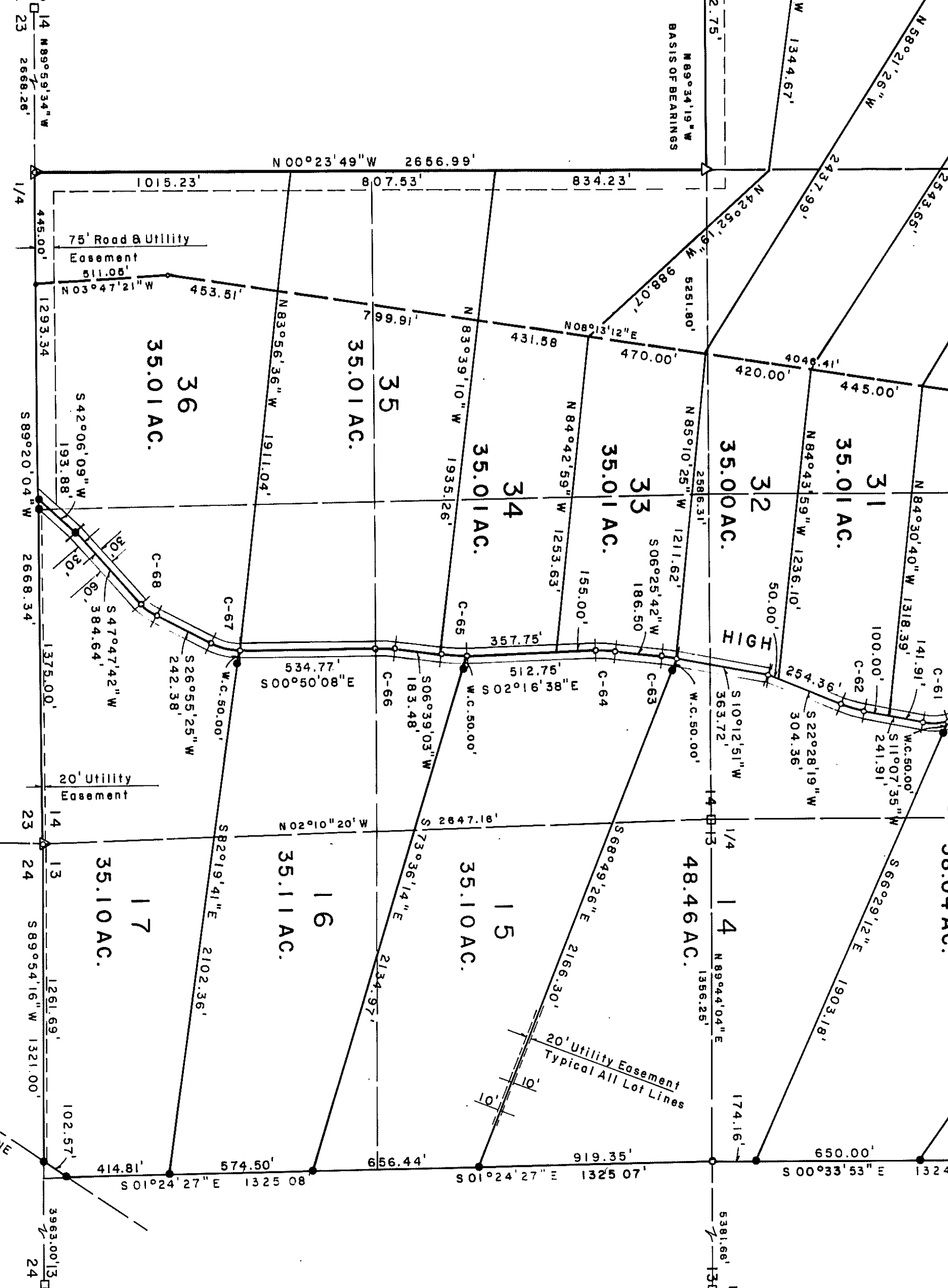
PHASE ONE
LOTS 1 THRU 17
PHASE TWO
LOTS 18 THRU 36



LEGEND
● = Set 5/8" Rebar & Cap
□ = Fld. Original Stone-Set
3/4" Alum. Cop Mon.
△ = Set 3/4" Alum. Cop Mon.



C-NO.	A	R	T	L
1	23°00' 34"	405.00'	82.43'	162.64'
2	88°20' 54"	360.00'	349.77'	555.11'
3	38°44' 08"	335.00'	107.21'	206.20'
4	27°55' 08"	330.00'	82.03'	160.80'
5	26°57' 31"	270.00'	64.72'	127.04'
6	63°11' 26"	420.00'	288.34'	463.21'
7	50°00' 01"	545.00'	254.14'	475.61'
8	45°23' 10"	520.00'	208.00'	395.73'
9	65°23' 20"	50.75'	32.57'	57.92'
10	38°21' 29"	85.00'	29.57'	56.91'
11	45°47' 47"	230.00'	97.15'	183.84'
12	21°07' 18"	370.00'	68.98'	136.40'
13	11°59' 08"	920.00'	96.58'	192.45'
14	18°55' 32"	484.61'	80.77'	168.07'
15	21°40' 53"	417.91'	80.03'	158.14'
16	15°45' 12"	630.00'	87.16'	173.22'
17	08°27' 03"	520.00'	38.42'	76.70'
18	04°48' 05"	980.00'	41.09'	82.12'
19	07°04' 47"	1470.00'	90.94'	181.64'
20	03°10' 00"	1720.00'	28.06'	56.60'
21	18°23' 04"	480.00'	80.03'	158.68'
22	17°23' 58"	600.00'	80.03'	206.91'
23	11°51' 54"	632.27'	65.70'	130.93'
24	23°01' 58"	307.76'	62.71'	123.72'
25	26°19' 25"	280.00'	65.48'	128.64'
26	50°03' 10"	185.00'	86.37'	161.61'
27	38°36' 02"	495.00'		



C-NO.	A	R	T	L
41	67°27' 31"	300.00'	200.30'	353.21'
42	31°54' 38"	286.11'	81.60'	159.54'
43	25°43' 37"	386.22'	81.60'	160.84'
44	09°14' 08"	625.00'	50.48'	100.74'
45	44°27' 38"	120.00'	63.10'	97.00'
46	64°30' 23"	100.00'	63.10'	121.59'
47	15°23' 49"	750.00'	101.38'	201.55'
48	23°45' 59"	350.00'	73.65'	149.18'
49	64°24' 37"	150.00'	103.88'	181.72'
50	24°05' 41"	300.00'	64.03'	126.16'
51	42°27' 03"	150.00'	58.26'	111.14'
52	25°46' 10"	130.00'	29.74'	58.47'
53	20°36' 10"	275.00'	49.98'	98.89'
54	14°32' 40"	697.24'	88.97'	176.99'
55	39°01' 09"	261.13'	88.97'	171.02'
56	30°26' 00"	180.00'	48.96'	95.61'
57	20°42' 18"	275.00'	50.24'	99.37'
58	26°22' 21"	215.00'	50.54'	99.27'
59	15°46' 28"	350.00'	49.98'	99.32'
60	30°16' 13"	195.00'	50.04'	97.74'
61	28°26' 38"	200.00'	51.06'	99.98'
62	11°20' 44"	500.00'	43.67'	99.07'
63	03°47' 09"	900.00'	23.74'	59.47'
64	08°42' 20"	620.00'	50.75'	101.25'
65	08°55' 41"	500.00'	50.75'	101.25'
66	07°29' 11"	600.00'	39.25'	78.40'
67	27°45' 33"	250.00'	61.77'	121.12'
68	20°52' 17"	220.00'	40.52'	80.14'

RECORDERS CERTIFICATE
This plat was filed for record in the office of the Clerk and Recorder of San Miguel County of Colorado, on the 20th day of August, 1987, in book 140, page 140.

County Clerk B Recorder
Gay Campbell
Deputy

OWNER:
BILLORADO PROPERTIES,
A PARTNERSHIP.

DEL-MONT CONSULTANTS, INC.
ENGINEERS - SURVEYORS
DELTA-MONTRORSE, COLORADO

JULY 1987
NO. 8748

RECORDED IN BOOK 140
PAGE 140
BY: *Gay Campbell*
PLAT # 250280
RECORDED IN BOOK 140
PAGE 140